



HDML-Cloner Box Evolve User Manual



HDML-Cloner Box Evolve User Manual

This documentation describes how to use HDML-Cloner Evolve Box (Model: CA-1180E) device.

Copyright Notice

Copyright © ClonerAlliance® Inc. All rights reserved.

Documentation Version 2.5.3

No part of this publication may be reproduced, transmitted, transcribed, stored in a retrieval system, or translated into any language or computer language, in any form or by any means, electronic, mechanical, magnetic, optical, chemical, manual, or otherwise, without the prior written permission of ClonerAlliance™ Inc.

Trademarks

HDML® is a registered trademark of ClonerAlliance® Inc.

Safety Notices

Before using HDML-Cloner Box Evolve, please ensure that you read and understand the safety precautions below:

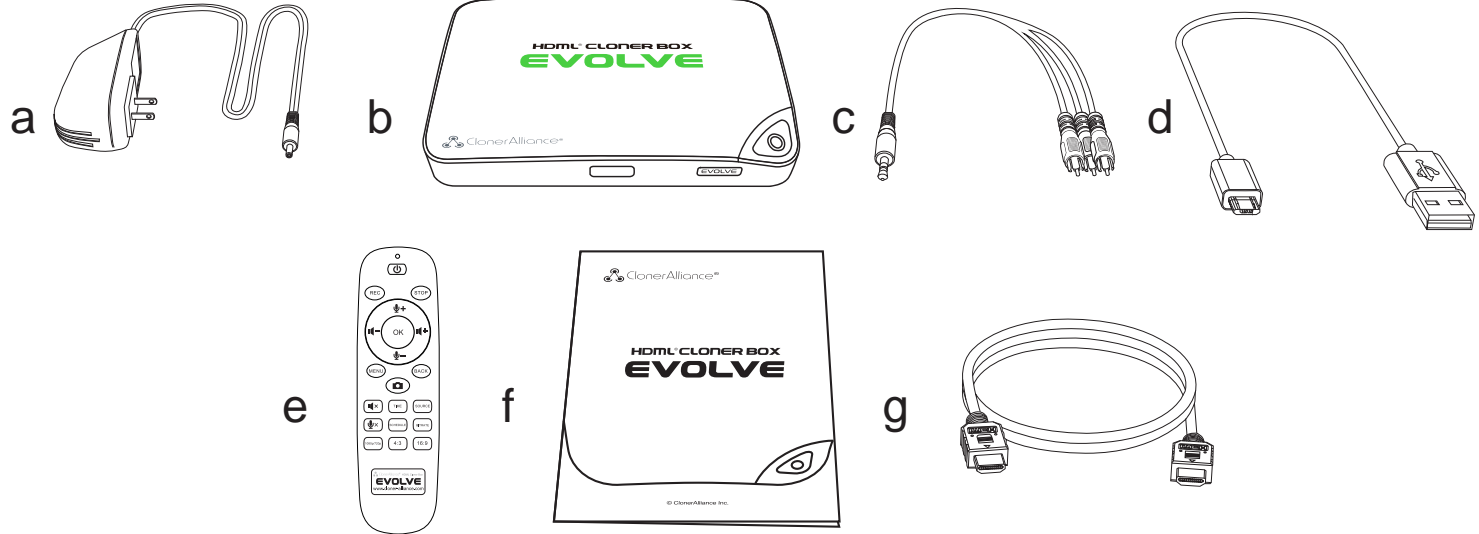
1. Do not attempt to open the case of HDML-Cloner Box Evolve or modify it in any way, as this will void the warranty.
2. Keep HDML-Cloner Box Evolve away from water and other liquids, as this may cause the unit to malfunction.
3. HDML-Cloner Box Evolve may become warm during use. This does not indicate malfunction.
4. Do not place heavy objects on HDML-Cloner Box Evolve, as this may cause the unit to overheat and malfunction.
5. If the exterior of HDML-Cloner Box Evolve requires cleaning, wipe it with a soft dry cloth.
6. Do not dispose of the unit via conventional domestic waste.

CONTENTS

1	Getting Started	1
1.1	Box Contents	1
1.2	Product Diagram.....	2
2	How to record videos to the USB flash drive/TF card	7
2.1	Connect.....	7
2.2	Record/Capture.....	8
2.3	Schedule Recording	10
2.4	Bitrate Setup.....	12
3	How to record videos to PC?	14
3.1	Install & Connect	14
3.2	Register.....	19
3.3	Record/Capture.....	21
4	Menu Navigation	28
5	Frequently Asked Questions	30
6	Supported Resolutions	34
7	Product Specifications	35
8	After Sales Warranty	36
9	Contact Us	37
10	Disclaimer	38

GETTING STARTED

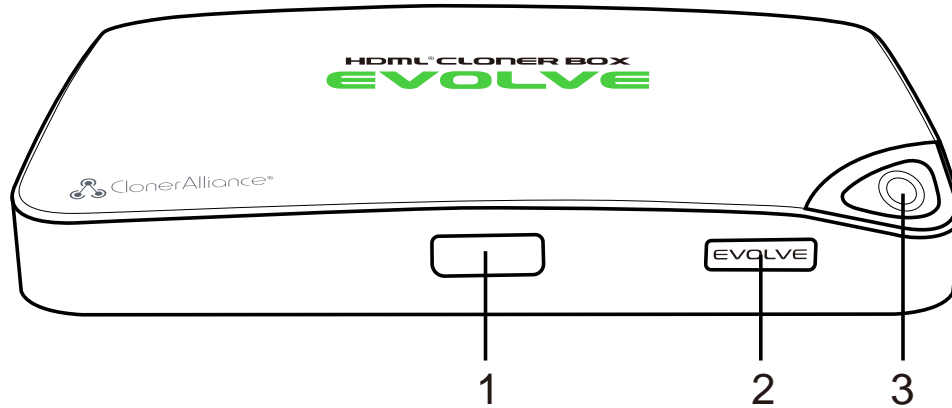
1.1 Box Contents



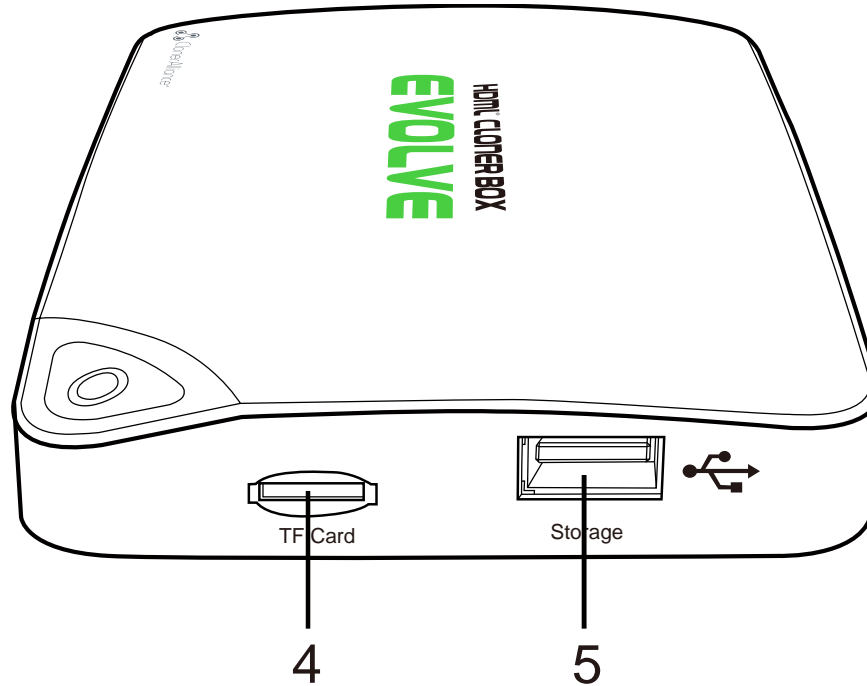
- a. Power Adapter
- b. HDML-Cloner Box Evolve
- c. AV Cable
- d. Micro-USB to USB Cable

- e. Remote Control
- f. User Manual
- g. HDMI Cable

1.2 Product Diagram

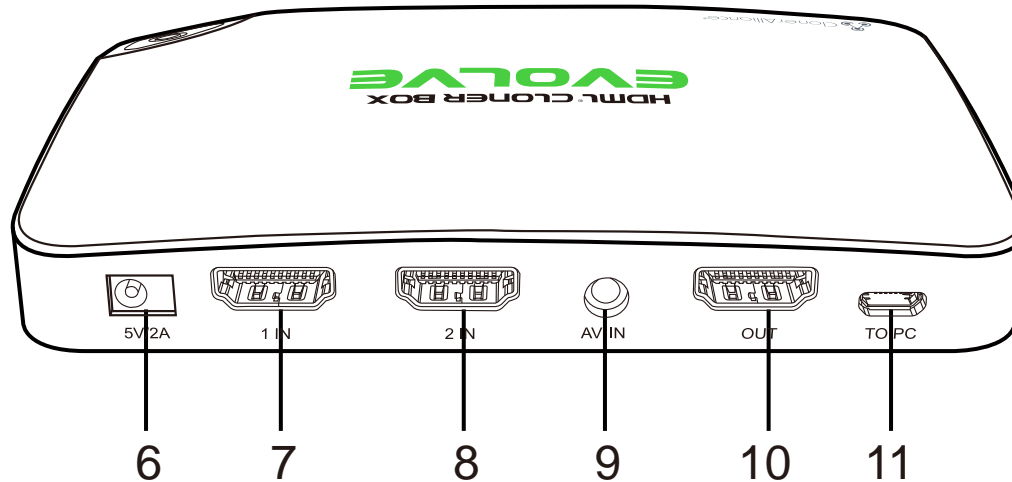


1. IR: Receives the IR signal from the remote control.
2. LED light: Three colors are available: white, blue and green. Plug in the power adapter, the LED will illuminate white for a while, then blink blue/green alternately and finally illuminate solid blue or solid green. In the process of recording, the LED will blink blue/white or green/white alternately. When the recording is stopped, the LED will blink blue/green alternately, it means it's buffering. Please don't remove storage devices until the LED light turns solid Blue/Green.
3. Record/Stop/Wakeup: Press this button to start or stop recording. You can also press this button to wake up HDML-Cloner Box Evolve when it is sleeping.

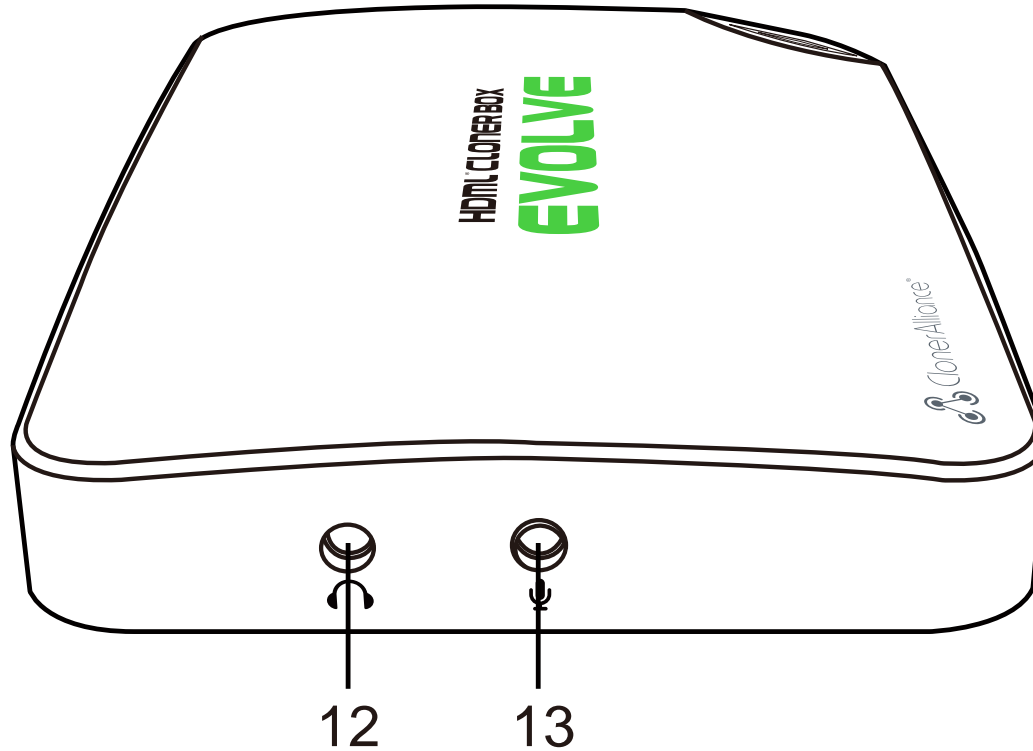




4. TF Card: Insert the TF card into this slot and record videos to this storage medium.

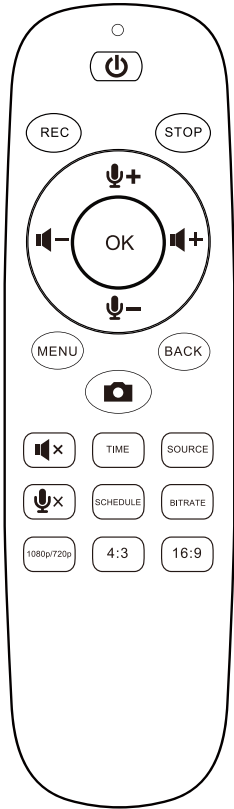
5. Storage: Insert the USB flash drive or mobile hard disk and record videos to this storage medium.



6. 5V/2A: Plug the power adapter into this port and power on HDML-Cloner Box Evolve.
7. 1 IN: Connect an HDMI cable between a source video player and HDML-Cloner Box Evolve.
8. 2 IN: Connect an HDMI cable between another source video player and HDML-Cloner Box Evolve.
9. AV IN: Connect the AV adapter cable between a source video player and HDML-Cloner Box Evolve.
10. OUT: Connect an HDMI cable between HDML-Cloner Box Evolve and TV.
11. TO PC: Connect the Micro-USB to USB cable between PC and HDML-Cloner Box Evolve for recording videos to PC. This function must be realized together with HDML-Cloner Pro Helper.



12.  :Insert the headphone plug into this jack to output the video sound.
13.  :Insert the microphone plug into this jack to input your live voice.



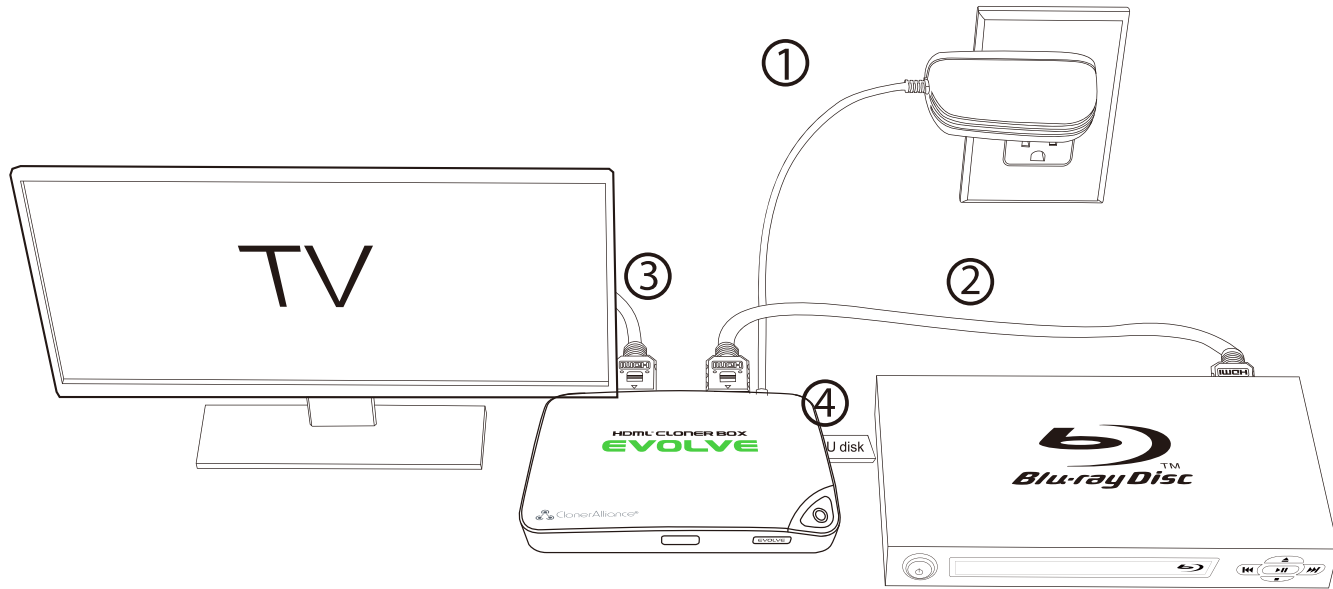
- Turn on/Turn off the power of HDML-Cloner Box Evolve.
- Start recording.
- Stop recording.
- Adjust the volume of the source video.
- Adjust the volume of the microphone voice.
- Show the main menu.
- Exit the menu.
- Confirm button
- Capture an image.
- Mute the video.
- Set the system time.
- Switch the input signal.
- Mute the microphone.
- Set the schedule recording time, start time and frequency.
- Select the recording bitrate.
- Switch the resolution between 1080p and 720p.
- Switch the aspect ratio to 4:3.
- Switch the aspect ratio to 16:9.

Tip: The remote control is powered by two AAA batteries, which are not included in the product box and need to be purchased independently.

HOW TO RECORD VIDEOS TO THE USB FLASH DRIVE/TF CARD

2.1 Connect

1. Plug the power adapter into the power socket and plug the other end into the 5V/2A port of HDML-Cloner Box Evolve.
2. Connect the video player to the “IN” port on HDML-Cloner Box Evolve via an HDMI cable.
3. Connect HDML-Cloner Box Evolve from the “OUT” port to TV via an HDMI cable.
4. Insert the USB flash drive/mobile hard disk or TF card into HDML-Cloner Box Evolve.



Tips:

1. If you insert both the USB flash drive and TF card into HDML-Cloner Box Evolve, the recorded video will be saved to the storage medium which is connected first.
2. For better user experience, please use a premium USB flash drive or mobile hard disk with high quality to avoid problems caused by disk quality.


2.2 Record/Capture

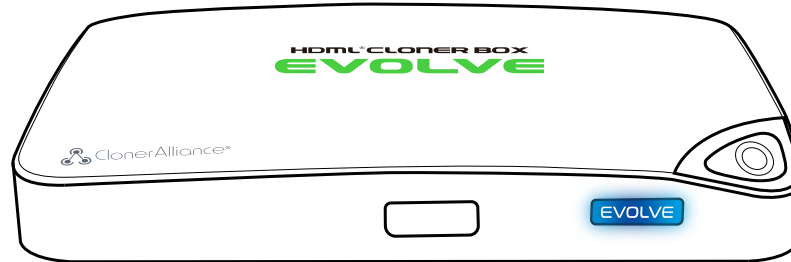
1. After all devices are connected properly, please power on all devices, the video image from the video player will be displayed on TV and the LED will illuminate solid blue or solid green.
2. Press the “Record/Stop” button on the capture box or press the REC button on the remote control. Then the LED will blink blue/white or green/white alternately, which indicates the capture box is in the process of recording.
3. Press the “Record/Stop” button again on the capture box or press the STOP button on the remote control. Then the LED will blink blue/green alternately, which indicates the recorded video is being saved.
4. When the LED turns solid blue or solid green from blinking blue/green alternately, it indicates the video has been saved successfully. Then you can remove the USB flash drive or TF card.

After recording, please take the USB device to your computer or player to PLAYBACK. HDML-Cloner Box Evolve is a standalone video capture device, and it doesn't support PLAYBACK function.

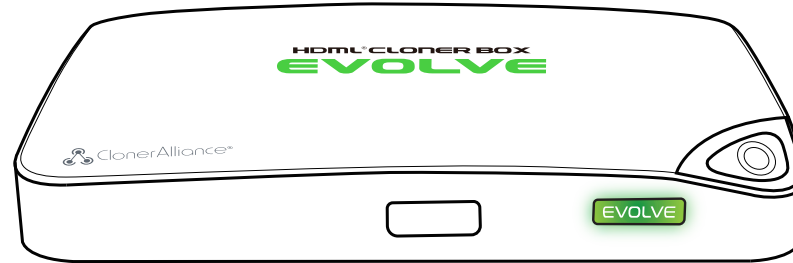
Note: DO NOT remove the USB storage drive/TF card from HDML-Cloner Box Evolve in the process of recording (Flashing Blue/Green LED indicates it' s still in the process of recording.) |

Tips:

1. HDML-Cloner Box Evolve will power on immediately when connected to the external power adapter. When the video players connected to 1 IN and 2 IN ports are shut off, HDML-Cloner Box Evolve will be in standby mode automatically after 3 minutes. If you want to use it again, please press the "Record/Stop" button on HDML-Cloner Box Evolve or press  on the remote control.
2. If the source video is 1080p, the LED will illuminate solid blue; if the source video is 720p or others, the LED will illuminate solid green.



3. HDML-Cloner Box Evolve supports the function of CEC wake-up. If the video player is turned on, other devices connected to it via HDMI cables will be turned on automatically.



2.3 Schedule Recording

IMPORTANT: If you set the recording frequency to “Once” , please make sure to create a schedule task at least 3 minutes in advance. If you set the recording frequency to “Every day” , please make sure to create a schedule task at least 1 minute in advance. Then HDML-Cloner Box Evolve will start recording the video at the scheduled time properly.

1. Press the TIME button on the remote control. Set the system time by using the four buttons of volume control on the remote control. Then select Save to finish the setting.




2. Press the SCHEDULE button on the remote control. Set the recording frequency (Once/Everyday), start time and recording time by using the four buttons of volume control on the remote control. Then select Save to finish the setting.

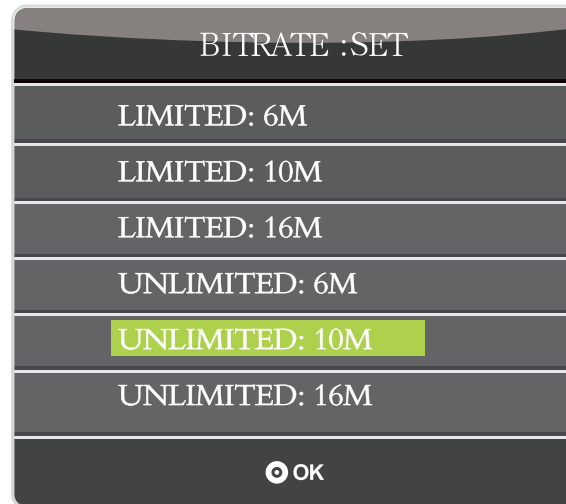


3. After finishing the setup, then HDML-Cloner Box Evolve will start recording videos automatically at the scheduled time. Note: If you want to record certain channel' s video, do select the channel first.

2.4 Bitrate Setup

Press  on the remote control and the bitrate selection menu will pop up.

There are six options available, which are: | LIMITED: 6M, | LIMITED: 10M, | LIMITED: 16M, | UNLIMITED: 6M, | UNLIMITED: 10M, | UNLIMITED: 16M. If you select a bitrate prefixed with LIMITED, the recorded video saved to the storage device in FAT32 or NTFS format will be split into several 2GB files. If you select a bitrate prefixed with UNLIMITED, the recorded video saved to the storage device in NTFS format will be a complete video, but if the storage device is in FAT32 format, the recorded video will still be split into several 2GB files.



HOW TO RECORD VIDEOS TO PC?

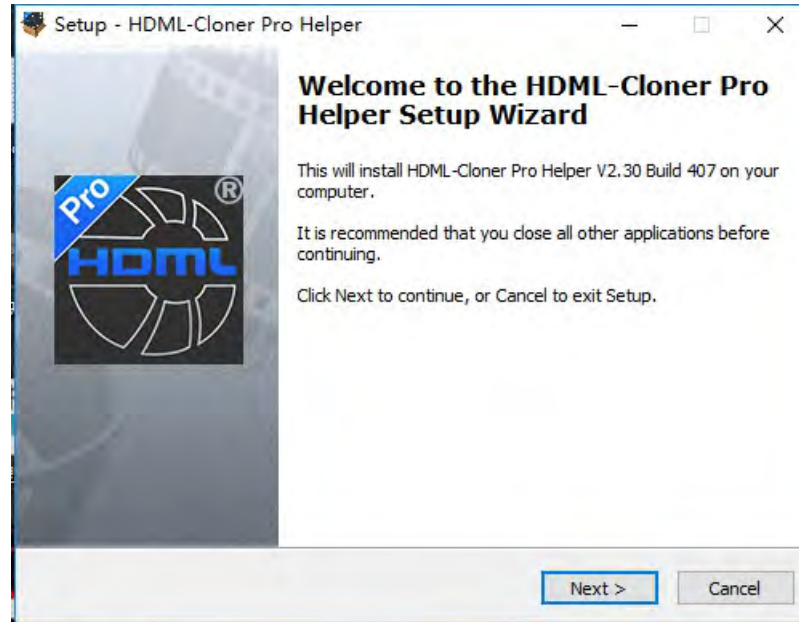
3.1 Install & Connect

Tip: The bundled software HDML-Cloner Pro Helper and MP4-Cloner can only work under windows PC. For Mac and Linux users, the functions of bundled software are not available.

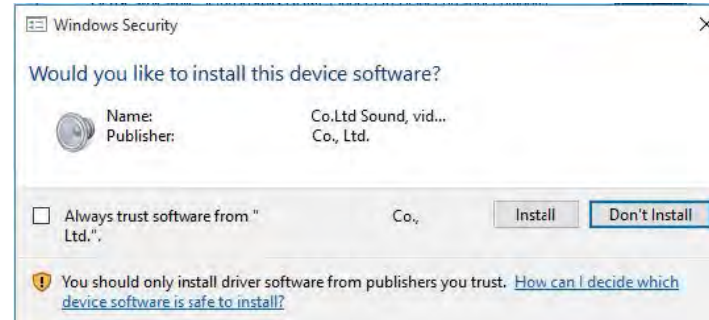
1. Install HDML-Cloner Pro Helper

Note: Prior to installing HDML-Cloner Pro Helper, please make sure you are using Windows 7 or later versions and your PC is equipped with USB 2.0 or 3.0 port.

- Download HDML-Cloner Pro Helper software from <https://static.cloner-alliance.com/download/hdml-cloner-pro.exe>
- Double click the installation file and the setup wizard window will pop up. Follow the installation wizard to complete the installation process. You do not have to restart your computer after the installation is complete.



Note: During the software installation, a driver needs to be installed as well. When there is a prompt popped up as below, please click “Install” .

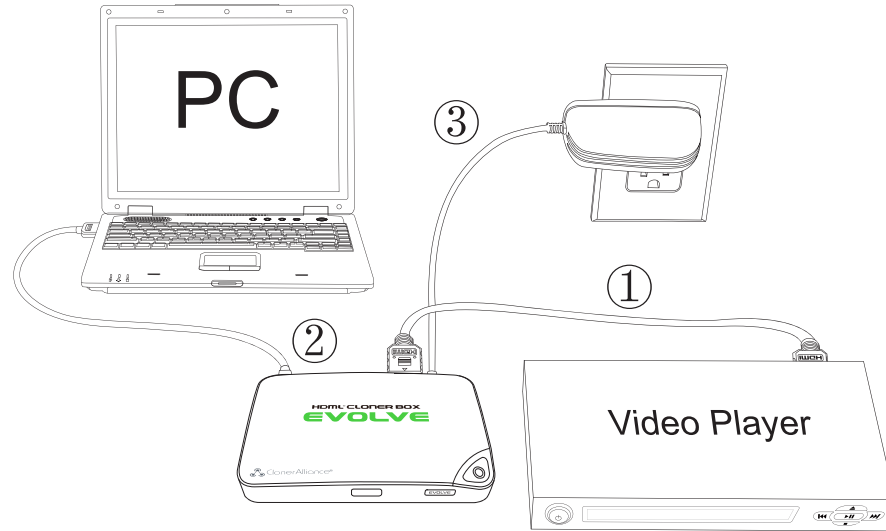


Note: Please don't connect HDML-Cloner Box Evolve to PC before installing the software or there will be a prompt "Unknown USB Device" .

2. Connect
3. Connect the video player to the "IN" port on HDML-Cloner Box Evolve via an HDMI cable.
4. Connect the Micro-USB to USB cable between the "TO PC" port of HDML-Cloner Box Evolve and the USB port of PC.
5. Plug the power adapter into the power socket and plug the other end into the 5V/2A port of HDML-Cloner Box Evolve.

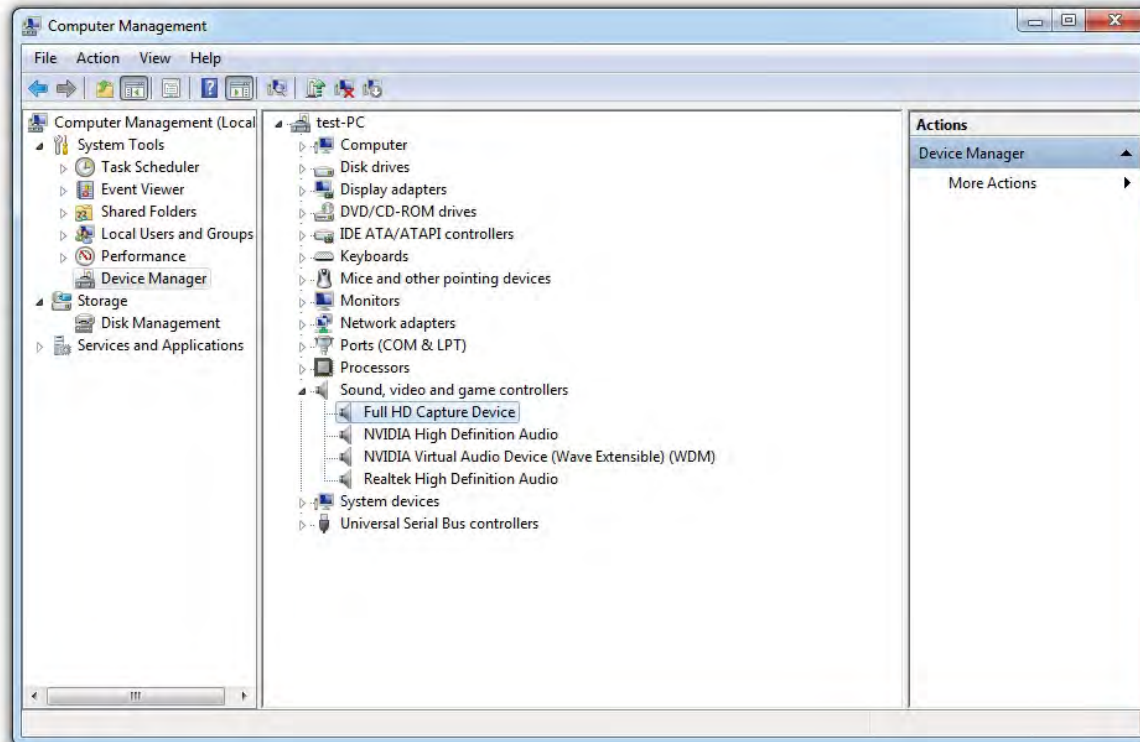
Tips:

1. You can connect up to 3 video players by connecting them to 1 IN, 2 IN and AV IN ports respectively via cables and press the "SOURCE" button on the remote control to switch the input signal.
2. When HDML-Cloner Box Evolve is connected to HDML-Cloner Pro Helper successfully, the LED light will turn white.



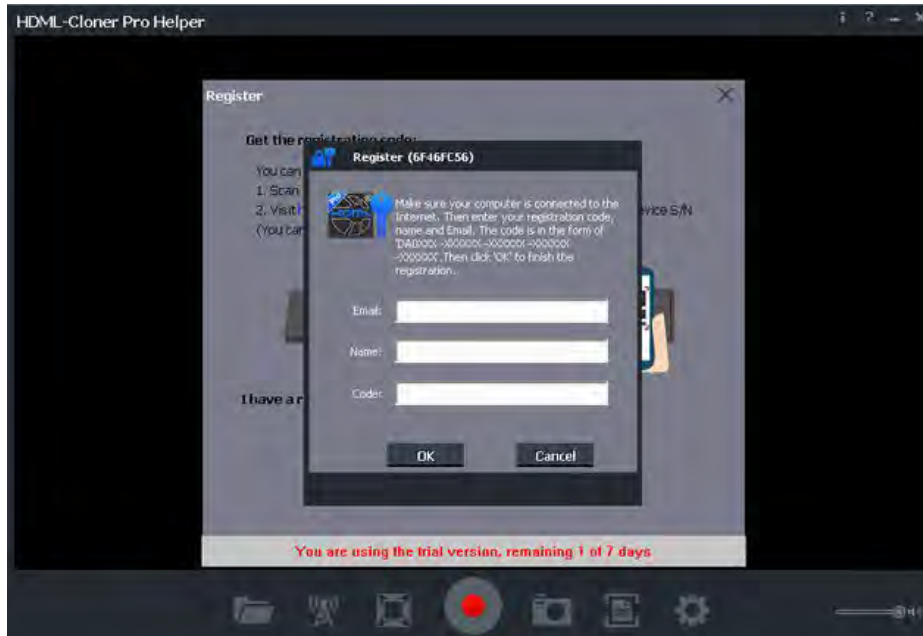
After all devices are connected properly, when you power on all devices, the Windows operating system will prompt “Found a new hardware” and install the driver automatically. Wait a while and when the prompt “Device driver software installed successfully” pops up (as shown below), run HDML-Cloner Pro Helper on the desktop.





3.2 Register

Please register HDML-Cloner Pro Helper first before using, otherwise it can only be used for 7 days. Launch HDML-Cloner Pro Helper. Click "Input registration code" button in the auto pop-up Register window. Fill in your proper Email address, real name and code. Then click "OK" to finish the registration.



- Get the registration code of HDML-Cloner Pro Helper?

There are two methods to obtain the registration code of HDML-Cloner Pro Helper.

1. Scan the QR code below to get the code if the S/N of HDML-Cloner Box Evolve is in the form of CEXXXXXXXXXX.



Do not miss out
Scan QR code to register and
get FREE bundled softwares.
www.cloner-alliance.com/register



(a)
[Click Here](#)

2. The code can be found on the back of HDML-Cloner Box Evolve if the S/N is in the form of 5971180XXXXXXXXXXXXXXXXXXXX.

HDML-Cloner Pro Helper Code:
DA0XXX-XXXXXX-XXXXXX-XXXXXX-XXXXXX

Please download the software from <https://www.cloner-alliance.com/download.html>



S/N: 5971180XXXXXXXXXXXXXXXXXXXX

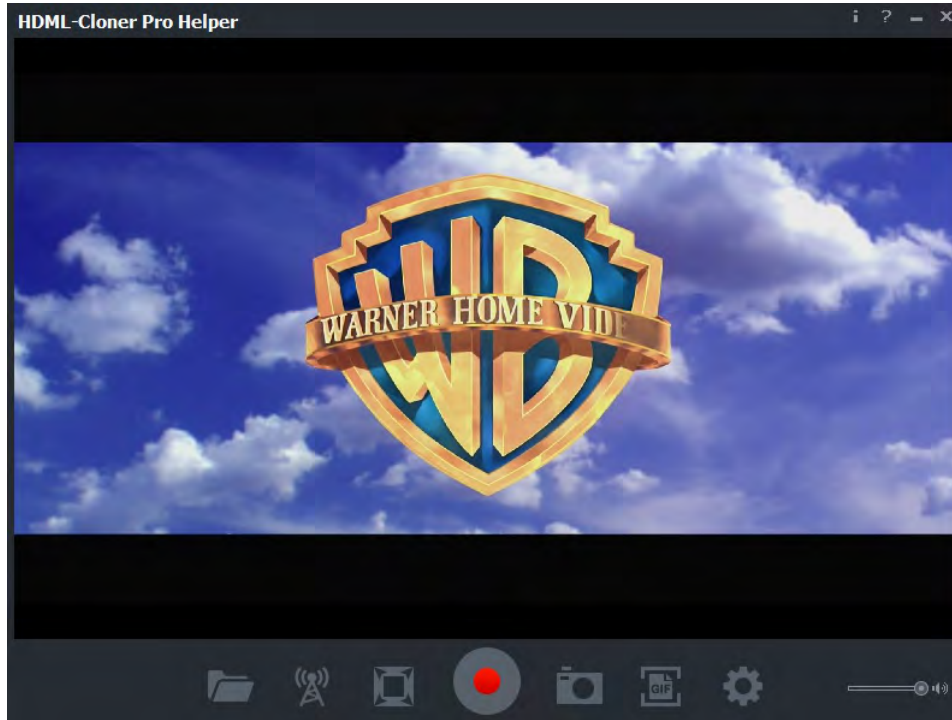
For more details about registering HDML-Cloner Pro Helper, visit [the link](#) to read step by step instructions.

For more details about recording videos to PC, please click the link below to visit the Frequently Asked Questions.

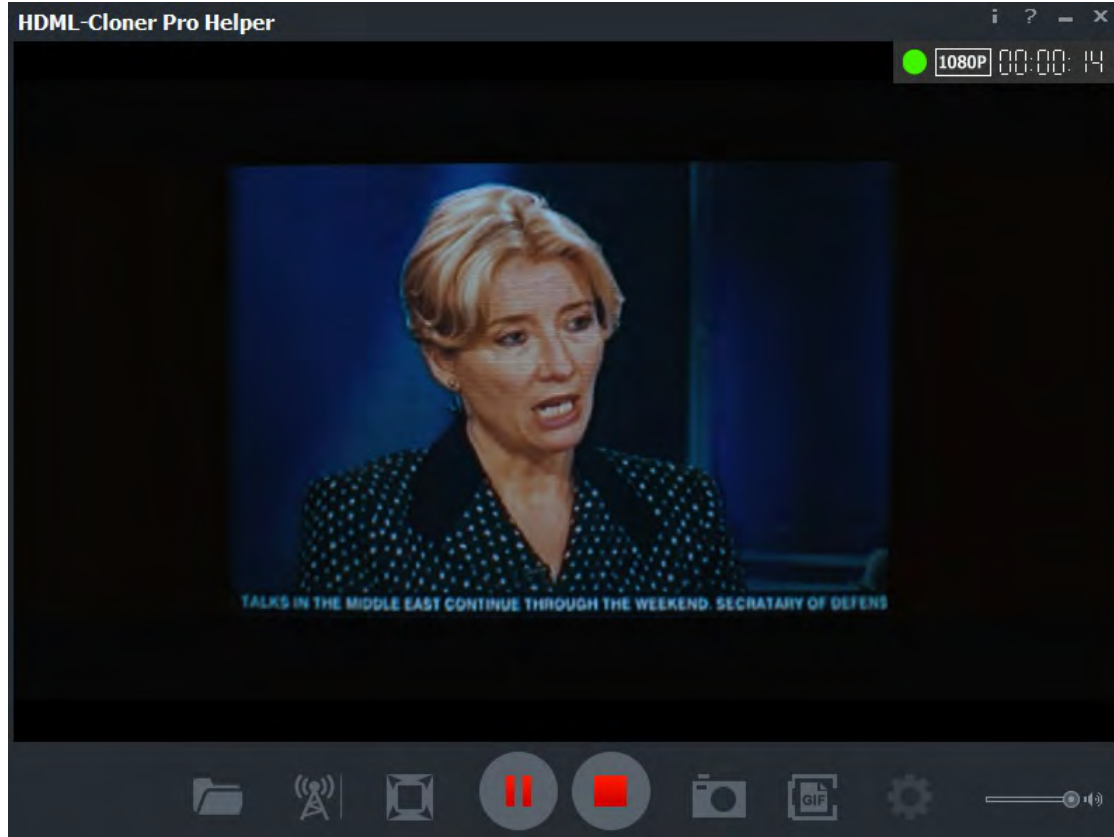
https://www.cloner-alliance.com/help/knowledgebase/cat_cloneralliance_box_evolve



3.3 Record/Capture





1. After all devices are connected properly, insert the video disc into the drive of the video player and run HDML-Cloner Pro Helper.

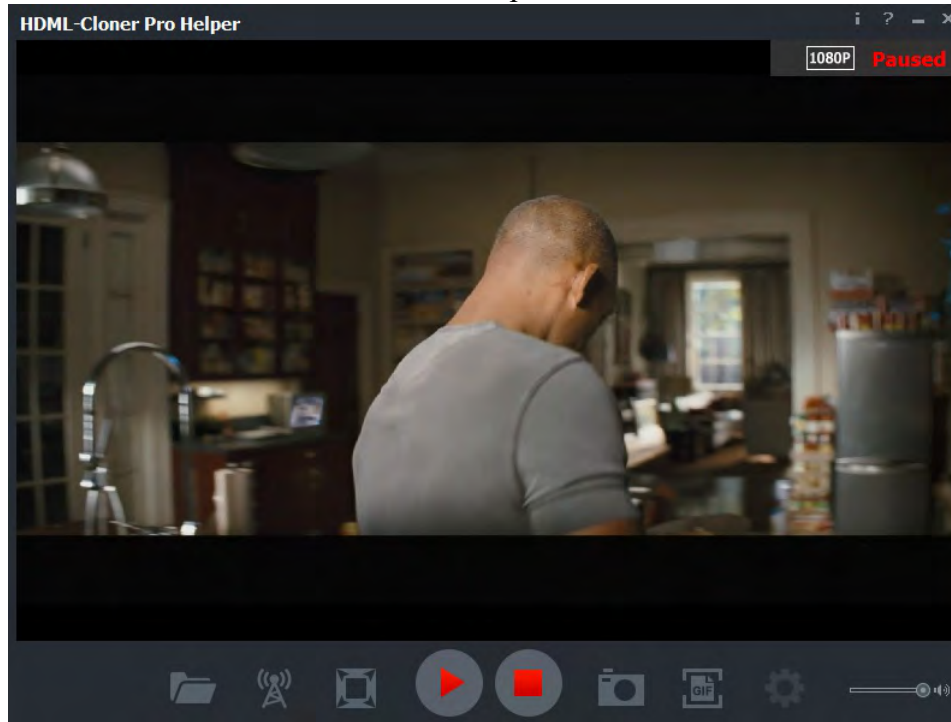


2. Click  to start recording.





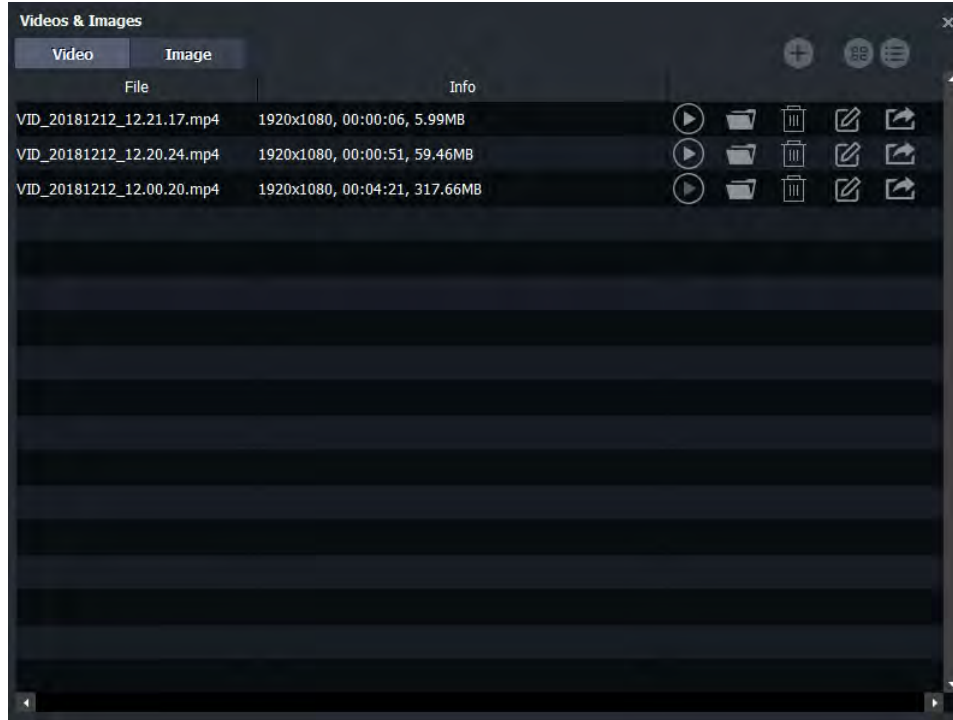
3. Click  to stop recording. Tip: During recording, you can also click  to pause at any-


time. When you want to resume, please click  to continue recording. Besides, you can Click  to take screenshots, click  to capture GIF animation function by clicking .

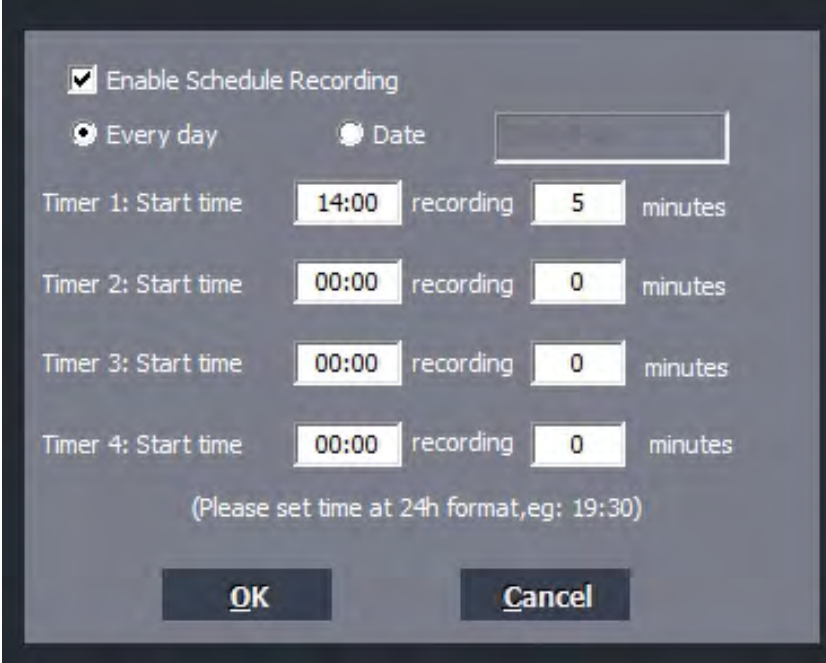


Software interfaces may vary depending on the version.

4. After recording, click  to view the recorded video. Then you can click  to play back the video directly.



HDML-Cloner Pro Helper also supports recording videos at the scheduled time. Click  to enter the "Setup" window. Then click the "Schedule Recording" button.



Enable Schedule Recording

Every day Date

Timer 1: Start time recording minutes

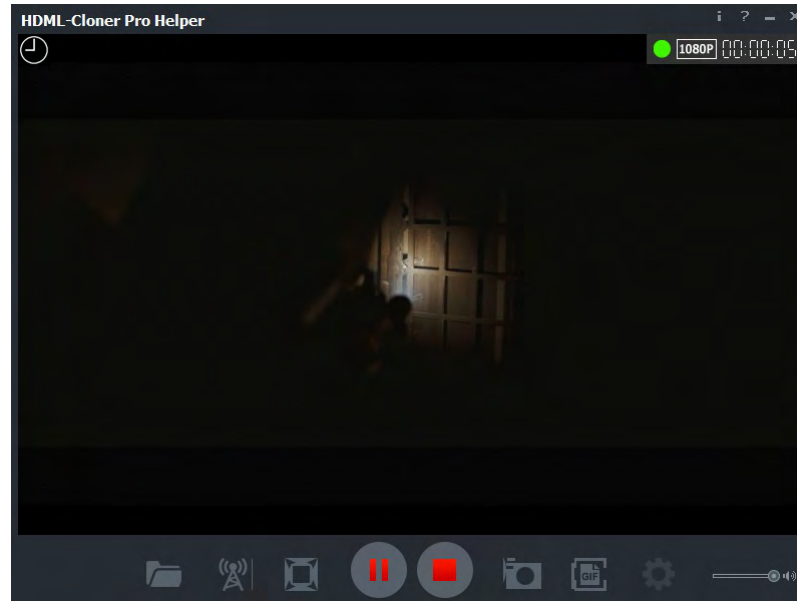
Timer 2: Start time recording minutes

Timer 3: Start time recording minutes


Timer 4: Start time recording minutes

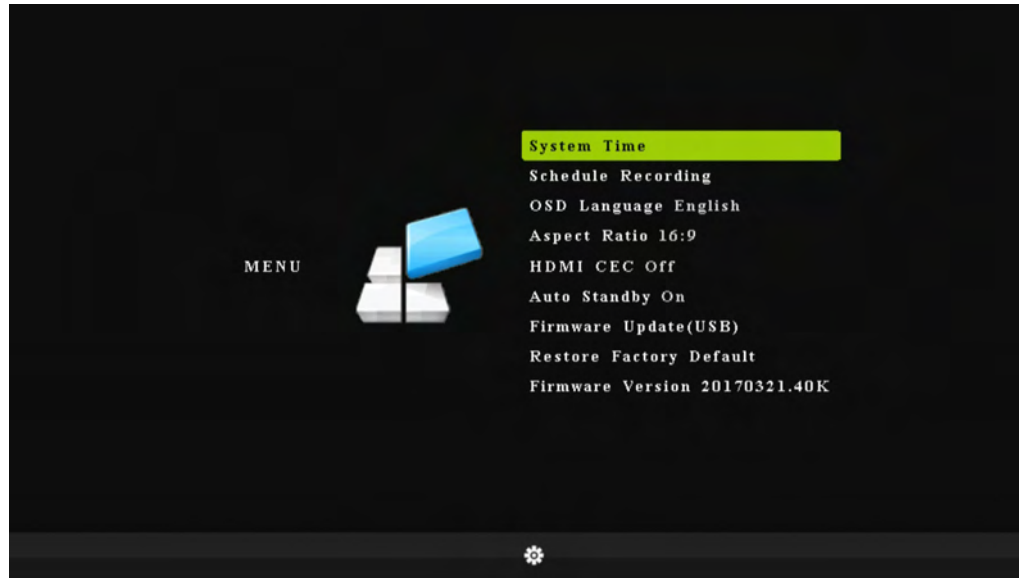
(Please set time at 24h format, eg: 19:30)

Please enable schedule recording first, and set the Start time and duration for schedule recording. Then click “OK” . Then videos will be recorded automatically at the scheduled time.



MENU NAVIGATION

Press  on the remote control to browse the menu settings of HDML-Cloner Box Evolve. There are seven options: System Time, Schedule Recording, OSD Language, Aspect Ratio, HDMI CEC, Auto Standby, Firmware Update, Restore Factory Default and Firmware Version.



System Time: Set the time of HDML-Cloner Box Evolve by year, month, day, hour, minute and second.

Schedule Recording: Set the schedule recording frequency, start time, recording time and delete the schedule task.

OSD Language: Set the language to be displayed on the menu. Czech, English, French, Japanese, Simplified Chinese, Traditional Chinese and German are available.

Aspect Ratio: Auto, 4:3, 16:9, Zoom 1, Zoom 2 and Just Scan are available. The default state is 16:9.

HDMI CEC: Set the HDMI CEC function On/Off.

Auto Standby: Set system auto standby function On/Off.

Firmware Update: Upgrade the firmware when there is a new version available. Please contact our support at support@cloner-alliance.com if you need.

Restore Factory Default: Restore the factory settings.

Firmware Version: Shows the current firmware version.

Tip: The parameter options may change as the firmware upgrades. Please refer to the text description. If you have any question about this, please contact us by support@cloner-alliance.com

FREQUENTLY ASKED QUESTIONS

You can visit https://www.cloner-alliance.com/help/knowledgebase/cat_cloneralliance_box_evolve at anytime to view latest technical questions and answers.

What should I do if the following interface appears on TV?

Och, something wrong!

Don't worry! ...

Don't worry, it's very easy to solve this problem. Please click the link below to find the answer.

https://www.cloner-alliance.com/help/knowledgebase/black_screen_tips_evolve

Why is there a prompt “No Signal” on TV screen after connecting HDML-Cloner Box Evolve?

Please press the “SOURCE” button on the remote control to switch to the proper input signal.

Why did the LED light blink blue/green alternately after I changed the bitrate?

If the bitrate has been changed, the capture box will be restarted. When the LED light turns solid blue or solid green, you can start to record.

If I insert both the USB flash drive and TF card into my capture box, where will my video be saved?

If you insert both the USB flash drive and TF card into HDML-Cloner Box Evolve, the video will be saved into the first connected storage device. Meanwhile, when the storage space of one device is full, the capture box will stop recording instead of recording to another storage device.

What will happen if a new input device is connected in the process of recording?

In this case, the output image will be switched to the image from the new connected device and the capture box will start recording the new video.

Why did my capture box switch itself off automatically?

After HDML-Cloner Box Evolve is connected, if your video players are shut off, HDML-Cloner Box Evolve will be in standby

mode automatically after 3 minutes. If you want to use it again, please press the “Record/Stop” button on HDML-Cloner Box Evolve or press on the remote control.

Does HDML-Cloner Box Evolve support the function of CEC wake-up?

Yes. The CEC function is set to Off as default, please switch it to “On” in setup menu if you want to enable it.

Tips to choose a right USB storage device:

- FAT32 (32GB and below size are recommended) and NTFS format are available. Note: exFAT format does not work with ClonerAlliance products.
- Using NTFS formatted storage device, the video will be recorded as a single file.
- For external hard drive, MBR partition type is required.
- It’ s recommended that the reading speed and writing speed are both 50Mbps or more. The faster the speed is, the better the performance will be.

What do different colors of the LED light indicate?

LED Status	Indication
Solid White	Plug in the power adapter, the LED will illuminate white for a while.
Solid Blue	The source video is in 1080p/1080i
Solid Green	The source video is in 720p or others
Blink blue/white alternately	Recording video with the resolution of 1080p/1080i
Blink green/white alternately	Recording video with the resolution of 720p
Blink blue/green alternately	Buffering

What kinds of mobile hard disks do ClonerAlliance products support?

2TB capacity or below. Less than 500mA current (Under dependent power sources). 10MB/s read-write speed or above (You can use CrystalDiskMark to test speed.). FAT32 or NTFS file system on Windows 7 operating system or above. Make sure your mobile hard disk is in the MBR partition style.

Why is there a prompt “Can’ t detect USB Device” ?

Please format your USB stick or unplug the USB stick from the USB port and plug it into HDML-Cloner Box Evolve again. If the solutions don’ t work, please send an email to support@cloner-alliance.com for direct help.

SUPPORTED RESOLUTIONS

Input	3840x2160 (30p) 1920x1080 (50p), 1920x1080 (60p) 1920x1080 (24p), 1920x1080 (25p), 1920x1080 (30p) 1920x1080 (50i), 1920x1080 (60i), 1280x1024 (60p) 1280x720 (60p), 1280x768 (60p), 1280x800 (60p) 720x480 (60i), 720x480 (50i) 640x480 (60p), 720x480 (60p), 720x576 (50p)
Output	1920x1080 (60p), 1280x720 (60p)
Recording	1920x1080 (30p), 1280x720 (60p)

PRODUCT SPECIFICATIONS

Output format	MP4 (H.264)
Video standards (Input)	NTSC, PAL
Supported disk formats	FAT32, NTFS
Input signals	HDMI1, HDMI2, AV, MIC
Output signals	HDMI (pass-through), USB, Micro USB, TF
Bitrate	Max: 16Mbps
Maximum storage capacity	Maximum 2TB for a USB flash drive; Maximum 32GB for a TF card
CEC wake-up	Support
Power supply	DC 5V/2A
Weight	3.5 oz
Dimensions	5.12 x 3.35 x 0.63 inches
Battery required	Two AAA batteries for remote control

AFTER SALES WARRANTY

ClonerAlliance Inc. provides 30-Day No Hassle Return(No Additional Fee) and 2-Year Replacement Warranty Service for all hardware. Please rest assure to use ClonerAlliance products.

CONTACT US

If you encounter any problem when using our products, please contact us by support@cloner-alliance.com or call 1-844-9-CLONER (toll free) and we will serve you with utmost satisfaction.

We'll offer a satisfying discount on batch purchase and affiliate program. If you are interested, please contact us by market@cloner-alliance.com.

DISCLAIMER

HDMI is a registered trademark of HDMI Licensing, LLC. USB is a registered trademark of USB Implementers Forum. HDMI and USB are registered trademarks of their respective companies. ClonerAlliance Inc. is not affiliated with those companies.



Toll free: 1-844-9-CLONER

Support Email: support@cloner-alliance.com

Market Email: market@cloner-alliance.com

www.cloner-alliance.com

Copyright ClonerAlliance Inc. All rights reserved.